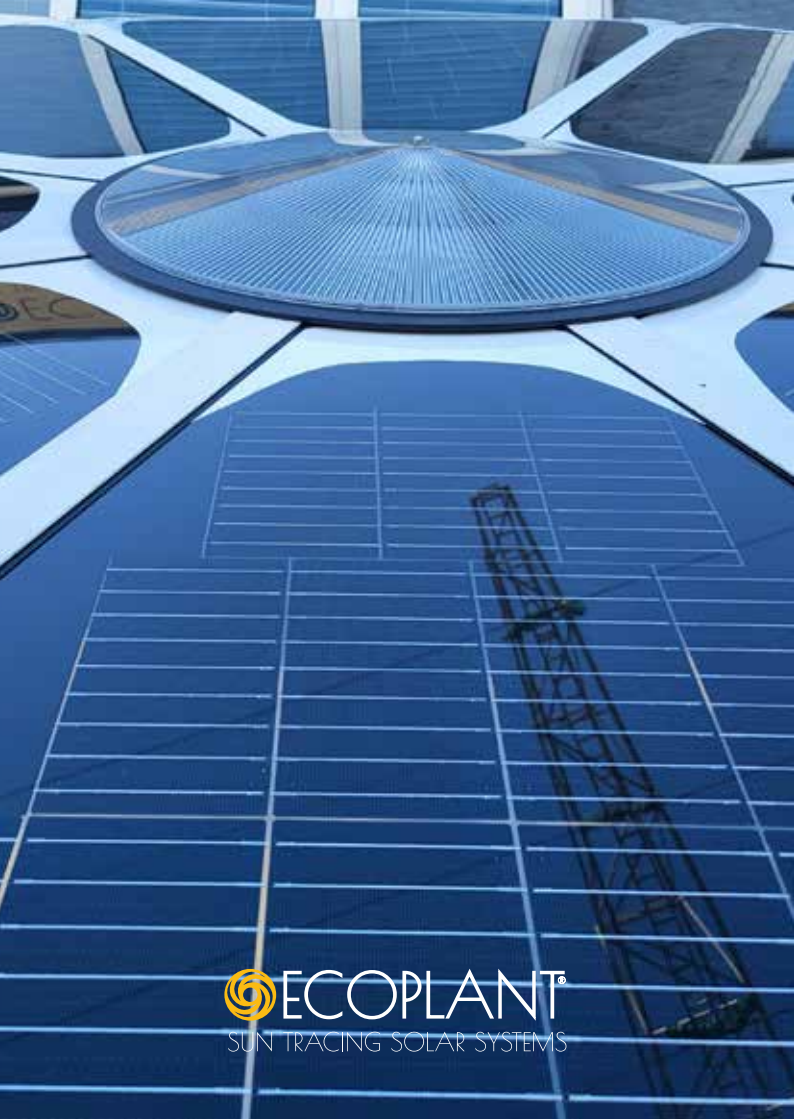


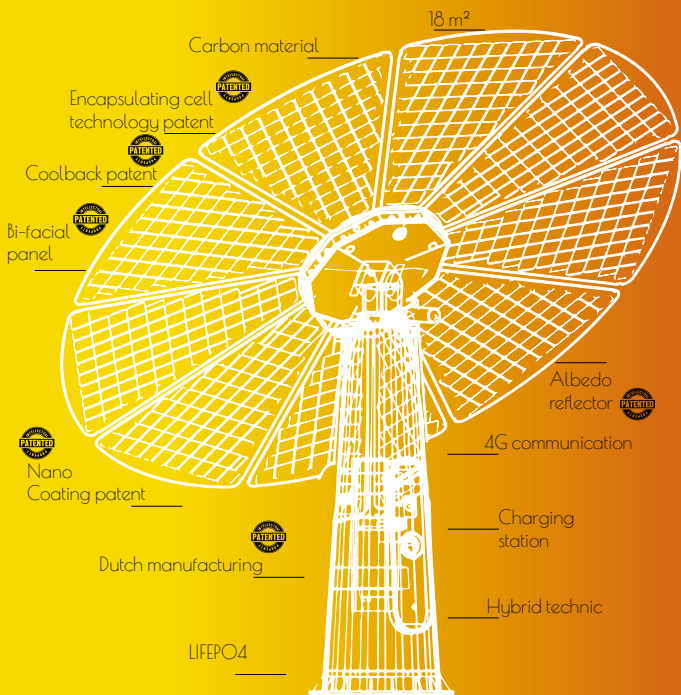


ECOPLANT®  
SUN TRACING SOLAR SYSTEMS





 **ECOPLANT**<sup>®</sup>  
SUN TRACING SOLAR SYSTEMS





 **ECOPLANT®**  
SUN TRACING SOLAR SYSTEMS

MADE IN THE  
NETHERLANDS



Made in the Netherlands with global ambition

Energizing a sustainable industry is a challenge which we all face. The future economic strength and general well-being of the Netherlands and the world in general depends on a clean and innovative industry. The Netherlands is offering Ecoplant an industrial ecosystem which support our sustainable progress through digitalization, robotization, financing and innovation.

Ecoplant is prepared to work closely together on internationalization.

International sustainable cooperation based on the beautiful design of our Ecoplant will be a starting point to speed up the global distribution of beautiful energy.

Our Ecoplant team is proud to be Dutch.

Handshake quality is very important. We are on a mission and never want to offend our respected partners and friends.

The Ecoplant team is down -to-earth

“Doe maar normaal, dan doe je al gek genoeg”. Literally, this means “Just behave normally, that’s crazy enough”. This Calvinist attitude Dutch people have is all about modesty and being down-to-earth! No talking but creating.

The Netherlands, port to Europe with global ambition!

Beautiful innovative sustainable energy will save our planet with new ideas and crazy dreams. Fully inclusive for all citizens of the world and looking for a better place for all generations to come!

Join us!  
Your Ecoplant team.

ALBEDO PATENT

 **ECOPLANT®**  
SUN TRACING SOLAR SYSTEMS





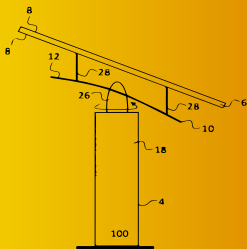
## SUN AND SHADOW TRACING

Ecoplant is a sun-tracking solar system that automatically positions the sun's shadow directly behind the solar panel. Its patented axial and leveling system ensures the panels follow the sun's trajectory.

The monocrystalline double-encapsulated solar panels are optimally oriented for maximum sun exposure. These panels are equipped with a patented cool-back interior (PT14615EPOO) that naturally lowers the working temperature. The nano coating keeps the blades clean, as dirt is washed away by rain.

The Ecoplant features a standalone design resembling a flower, with nine bi-facial panels arranged in a leaf-like pattern. These leaves are stationary, ensuring the structure remains sturdy without bending or shrinking at the top. The design is robust and VIRO tested, meeting Din\_EN 12424 Class 2 standards.

The Albedo Effect enhances the system's efficiency by reflecting light onto the bi-facial solar panels. The Albedo track solar equipment maximizes the collection of rear-side energy using minimal materials.







ECOPLANT  
SMA TRACING SOLAR SYSTEMS

ECOPLANT®  
SUN TRACING SOLAR SYSTEMS





148%  
more effective  
than traditional  
photo voltaic panel



+40%

Suntracking efficiency, during the day full advantage of the optimal direction to the sun.

+95%

Albedo sun tracking bi-facial power.

+10%

Natural temperature control. Let natural wind carry away overheating. No cooling cost.

+3%

Easy nano clean solar panel.  
More effective efficiency of the available sun.

+ 148%  
efficiency

100W ECOPLANT

Flex Bi-facial Albedo solar panel

VS

100W ordinary  
solar glass panel.

- 80%  
Less material  
= less weight.

+ 15%  
Absolute top  
performance.

+ 90%  
Circular low  
Co2 footprint.

# SMART

## SUN & ALBEDO TRACKING

Allways right towards the sun.

## HYBRID USE

All-in-one easy operating system.

## COOLBACK

Natural cooling system.

## EASY 2 MOVE

Moving energy, no fixed installation.

## CONTROL

GPS & GSM product efficiency control (IoT).

## OPTIONS

Car charger Camera,  
led lighting,  
NFC payment operation.

## SAFETY

low insurance cost.

## LIFEPO4

Super safe Eco batteries.

## LED

Bright light emitted diodes during the night. Off Grid, independent, sustainable!

## WARRANTY

Full operational warranty.

## GPS-GSM

Instant data control, direct connection to the international Ecoplant datasystem.

## CAR CHARGER

System control + information system including easy pay for energy refuel.

## NANO

## TECH

Easy self cleaning monocrystalline solar.

## PEAKSHAVING

Effectively use of flexible energy.

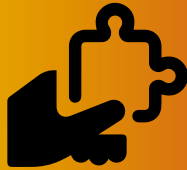


 **ECOPLANT**<sup>®</sup>  
SUN TRACING SOLAR SYSTEMS



## Personalised

Personalised Ecoplant products for customers.



## Solutions

Complete service enhances operation efficiency.



## Onsite

### service

Technician support.



## Online

### service

24 / 7 available.



## Lifespan Care

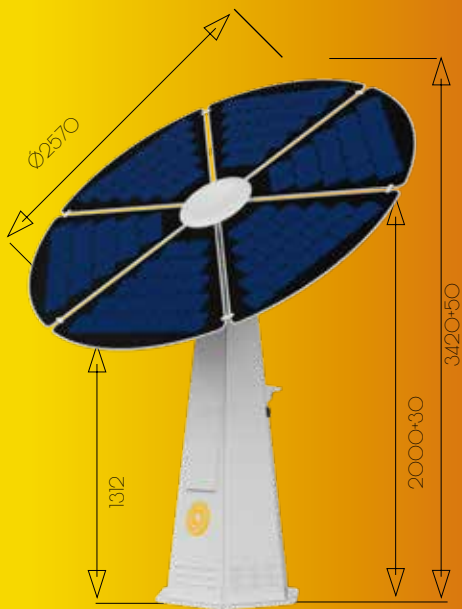
Service and efficiency control during operating.



## Platform

Available control app for active interaction.





HEX 600



## POWER

Upto 2000 kWh/  
2.000 Sun hours.  
(depending on  
various conditions)

## GPS/GSM

Remote  
service  
control.



## SPACE

Extra battery.



-40 °C ~ 55 °C

Working temp.

## HEXAGON

Knock down  
construction.  
Easy access

## Class 2

Wind resistance.



+ / + 5%

Encapsulation  
technology.



+ / + 40%

Suntracing  
efficiency.



+ / + 10%

Natural  
climate control.

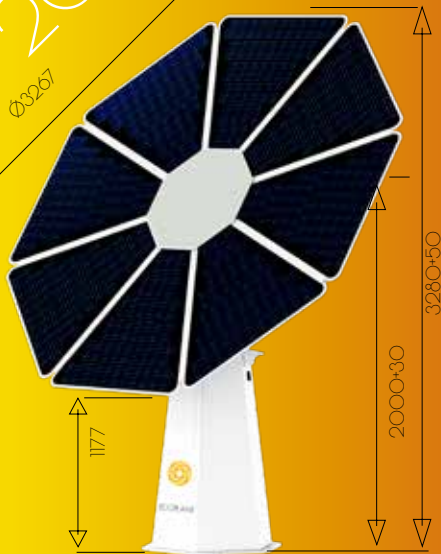


## Anti salt spray

Salt erosion resistant.

NEW 2024

Ø3257



HEX 2000



## POWER

Upto 3000 kWh/  
2.000 Sun hours.  
(depending on  
various conditions)

## GPS/GSM

Remote  
service  
control.



## SPACE

Extra battery.



-40 °C ~ 55 °C

Working temp.

## HEXAGON

Knock down  
construction.  
Easy access

## Class 2



Wind resistance.

+ / + 95%

Bi-facial  
technology



+ / + 40%

Suntracking  
efficiency.



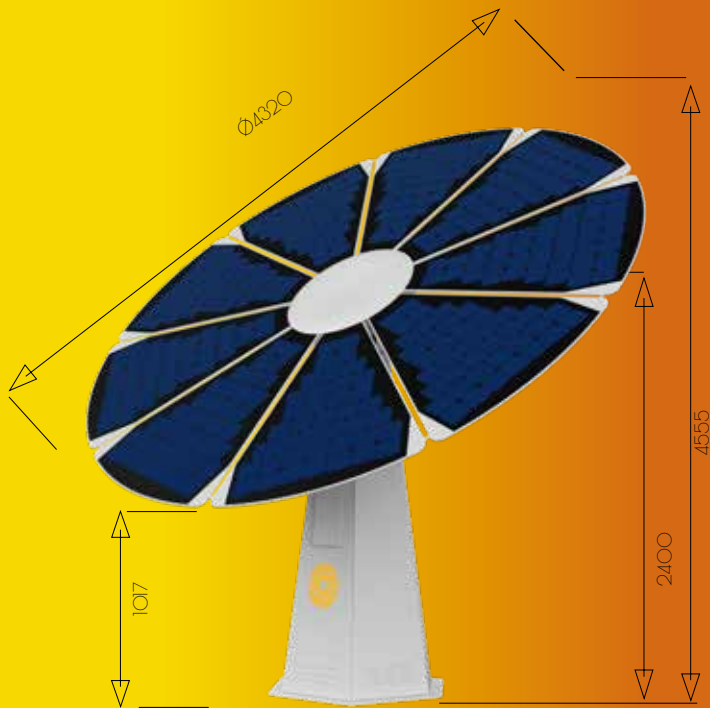
+ / + 10%

Natural  
climate control.



## Anti salt spray

Salt erosion resistant.



HEX 3000



## POWER

Upto 4000 kWh/  
2.000 Sun hours.  
(Depending on  
various conditions)

## GPS/GSM

Remote  
service  
control.



## Height

MAX 4.6M @ 55°  
MIN 2.4M @ 10°



-40 °C ~ 55 °C

Working temp.

## Charging

Central charging  
(ClassII) plug.

## Class 2



Wind resistance.

+ / + 5%

Encapsulation  
technology.



+ / + 40%

Suntracing  
efficiency.



+ / + 10%

Natural  
climate control.



## Anti salt spray

Salt erosion resistant.



# HEX 7000



www.icorian.com





## POWER

Upto 7000 kWh/  
2.000 Sun hours.  
(Depending on  
various conditions)

## GPS/GSM

Remote  
service  
control.



## Height

MAX 4.6M @ 55°  
MIN 2.4M @ 10°



-40 °C ~ 55 °C

Working temp.

## Charging

Central charging  
(ClassII) plug.

## Class 2



Wind resistance.

+ / + 95%

Bi-facial  
Albedo  
technology.



+ / + 40%

Suntracking  
efficiency.

+ / + 10%

Natural  
climate control.



## Anti salt spray

Salt erosion resistant.






# HOME ENERGY



 **ECOPLANT<sup>®</sup>**  
SUN TRACING SOLAR SYSTEMS



LiFePo4  
5.12 kWh  
43.6 KG

BMS   
Battery  
management  
system.

Nominal  
Capacity  
51.2V 100Ah



-5 °C ~ 35 °C  
Working temp.  
(Dis)charge.



Lifecycle  
6.000 cycles

Operation

Voltage  
40 V - 58.4 V

(Dis)charge

Charge 100A  
Pulse Discharge  
Current 300A  
Cycle Life >  
6000Cycles



Communication  
Can. RS485

CE UK CA IP65  
UN38.3.MSDS



# FESTIPLANT



ECLIPS



PRE & I



E-Locker



HEX 3000



Raython Battery



LiFePo4 Battery

## CARBON FREE PARTY

[WWW.FESTIPLANT.SOLAR](http://WWW.FESTIPLANT.SOLAR)



 **ECOPLANT**<sup>®</sup>  
SUN TRACING SOLAR SYSTEMS

# MOBILITY



## CARBON FREE CAR-CHARGER







 **ECOPLANT®**  
SUN TRACING SOLAR SYSTEMS

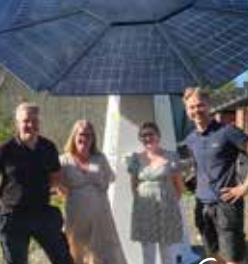
# STUDENT



# CARBON FREE LEARNING









Partners / distributors:



 **ECOPLANT**<sup>®</sup>  
SUN TRACING SOLAR SYSTEMS

# TECHNICAL DATASHEETS



HEX 600



HEX 2000



HEX 3000



HEX 7000



BATTERY



CHARGER



SOLARSOL



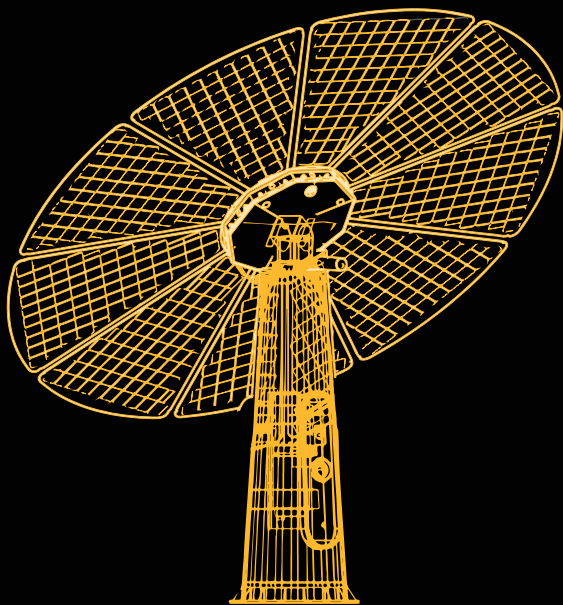
STUDENT ENERGY



FESTIPLANT







[WWW.ECOPLANT.SOLAR](http://WWW.ECOPLANT.SOLAR)